

# MONTHLY MEMBERSHIP PROGRESS REPORT

District 322C5

Results as of: 2/29/2020

GMT:

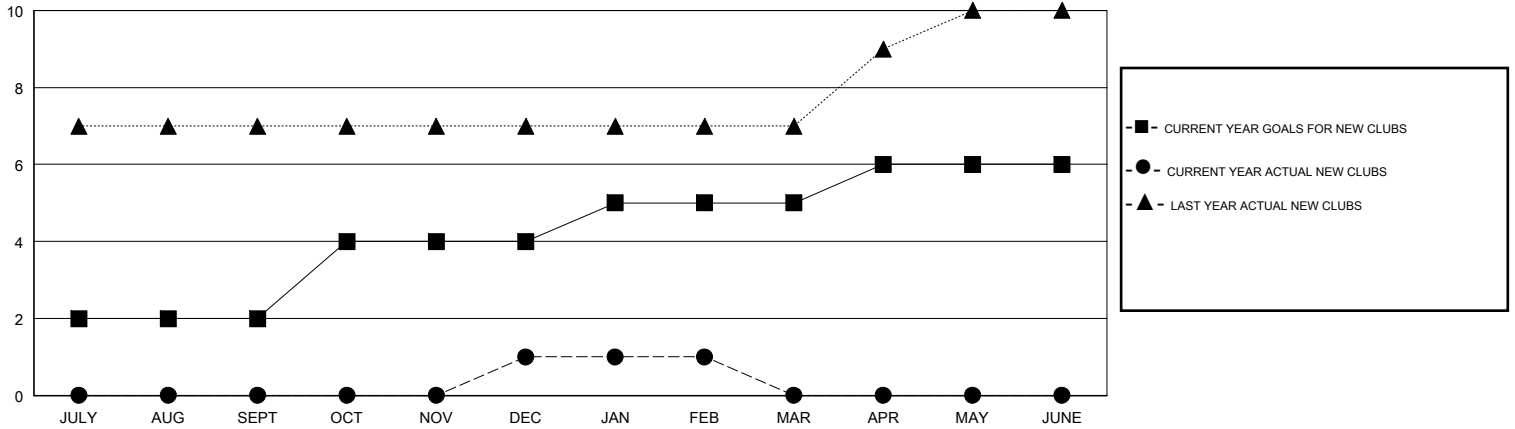
LOCATION INDIA

GMT CA

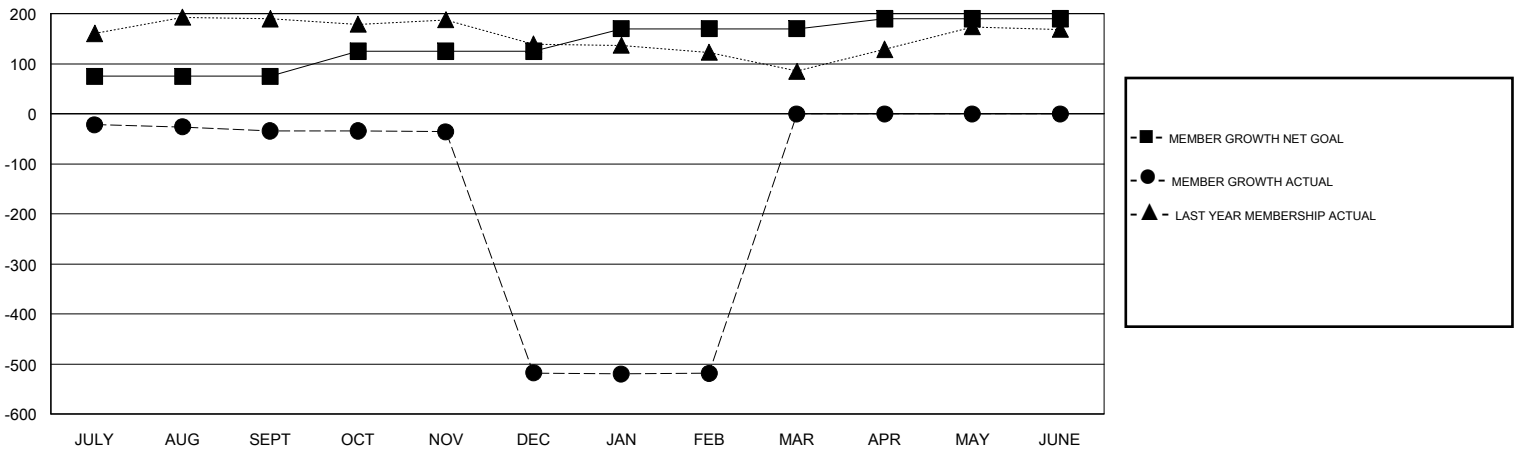
Clubs			
RESULTS FOR 2019-2020			
QUARTER	NEW CLUB GOAL	NEW CLUBS	DROPPED CLUBS
JULY/AUG/SEPT	2	0	0
OCT/NOV/DEC	2	1	20
JAN/FEB/MAR	1	0	0
APR/MAY/JUNE	1	0	0

Members			
RESULTS FOR 2019-2020			
QUARTER	MEMBER GROWTH NET GOAL	MEMBER GROWTH ACTUAL	DROPPED MEMBERS ACTUAL (including transfers)
JULY/AUG/SEPT	75	15	46
OCT/NOV/DEC	50	77	555
JAN/FEB/MAR	45	6	5
APR/MAY/JUNE	20	0	0

GOALS AND ACTUAL NEW CLUBS CUMULATIVE



GOALS AND ACTUAL MEMBERS CUMULATIVE



DROPPED CLUBS: 20	25 CLUBS OF 66 ADDED 1 OR MORE NEW MEMBERS	<u>GENDER DISTRIBUTION</u> MALE                    898 (60.92%) FEMALE                   576 (39.08%)
<u>DROPPED MEMBERS</u> DECEASED                    0 CLUB CANCELLED               476 OTHER                            130 <hr/> TOTAL                            606	<a href="#">CLICK HERE FOR CUMULATIVE MEMBERSHIP DATA</a>	TOTAL FAMILY UNIT MEMBERS                    726 FAMILY MEMBERS PAYING HALF DUES                    392